

OHD
OUR HOUSE DESIGNS

SPECIALTY HIDES





INDEX

OHD A Leather Story.....	3	Pub Worn Images.....	13
What is Hair-On Leather?.....	4	What is Hand Rubbed Leather?.....	14
Hair-On Hide Images.....	6	Hand Rubbed Images.....	15
What is Embossed Leather?.....	8	Enduring Craftsmanship.....	16
Embossed Hide Images.....	10	“Shown In” Reference Page.....	17
What is Pub Worn Leather?.....	12		



OHD | A LEATHER STORY

The art of leather upholstery is something at which Our House Designs excels. We have been known as a leather company since our inception and we continue to provide unique, high quality leather upholstery services.

We offer a wide variety of one-of-a-kind leather looks and applications to suit your needs. Since we are a custom upholstery company, we can do any combination of specialty, aniline, protected, and nubuck leathers.

We have 38 years of experience working with specialty leathers and our team is particularly skilled in their utilization. Because of the uniqueness of specialty hides, they require extra attention during patterning, cutting, and upholstering. Few people in the furniture industry can match the skill of the OHD team to produce truly phenomenal specialty hide upholstered pieces.

Specialty hides that we offer include Hair-On hides, Embossed hides, Hand Rubbed leather, and OHD's exclusive Pub Worn leather Series. We maintain a diverse collection of leathers in each category to ensure you have exactly what you need to create the perfect piece for your home.

WHAT IS HAIR HIDE / HAIR-ON LEATHER?

Hair Hide leather is exactly what it sounds like, leather that has hair on it. Specifically it is leather that still has the original hair on it, providing a natural looking accent to your home.

Hair Hides are very versatile and come in a variety of different colors and patterns. Cows are born with colorful and unique hides, not just plain black and white spots. Natural hair hides come in all white, tricolor, brindle, speckled, salt & pepper and gray to name a few. Each cow has a unique hide, which means that no two hides will be the same.

Much like a premium quality leather, hair-on hides have a natural beauty that offers individuality in every piece. Furnishings covered in hair-on hide have an individuality about them, highlighted by the unique color patterns, hair length, and natural markings of the hide. While hair hides have been around since the dawn of furniture making, there have been new unexpected applications in fashionable styles over the last few years.

Hairs can be dyed, printed on, or even have patterns laser cut into them for added dimensionality. These altered hides allow you to have more curious looking pieces in your home, like zebra print or brightly colored hides, while still sourcing your leather from the cattle industry. The leather industry only uses the hides of cows which are farmed for meat and dairy products, making it not only a beautiful material for your home, but a sustainable one as well.

At OHD, we carry hair hides ranging from natural to printed to acid-washed. Our hair hides are carefully selected and sourced from some of the best leather producers in the country.

Hair Hides



Abel Natural
319H-11



Light Grey Brindle
484H-41



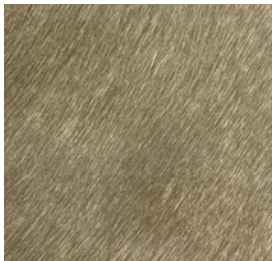
Trigger
415H-11



Chiffon Angora
348H-11



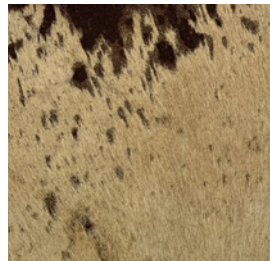
Palomino
557H-21



Silverback
310H-11



Buck
423H-11



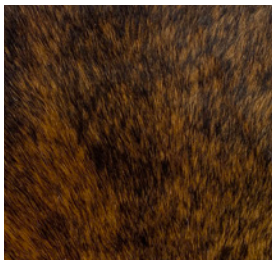
Stallion
358H-81



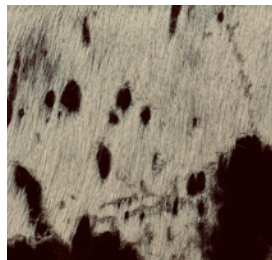
Scottish Highland
558H-81



Nguni
409H-81



Rockin' Ranch
385-81



Pony Print
520H-21



Zebra
342-41



Black Dapple
483H-61





WHAT IS EMBOSSED LEATHER?

Embossing leather is a step in the finishing process where the cow hide is stamped or rolled under great pressure to create a pattern or design in the hide. The variety of patterns is tremendous, with motifs including alligator, crocodile, ostrich, flowers, and various geometrics to name just a few.

Embossing is typically done on the grain side by compressing the leather grain structure, allowing the uncompressed leather fibers to remain above. Two sided embossing is another technique that uses two embossing plates pressing from both sides (positive and negative). Both techniques create a richly textured three-dimensional effect that is sure to stand out.

The most common types of embossing include blind embossing, gold embossing, and color imprint. While blind embossing involves imprinting patterns without any color, gold embossing includes using gold films for imprinting. Color imprint, on the other hand, uses color films for the embossment.

Our House carries an assortment of embossed leathers, including geometric patterns and a wide variety of croc prints. Embossed leathers add character to your furniture and offer wonderfully unique accents for your home.

Embossed Hides



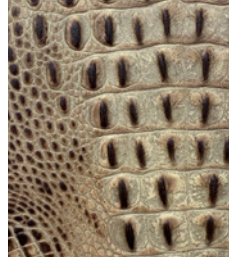
Shimmer Croco
381D-21



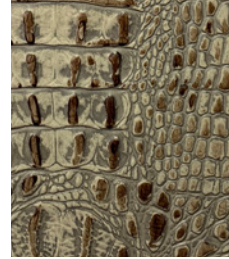
Demask Pearl
485D-11



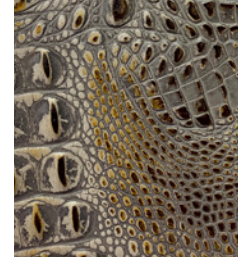
Flat White
346D-11



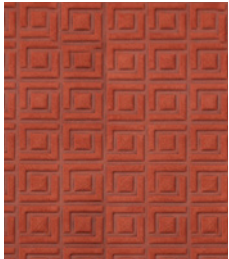
Crocochino
580A-81



Lattecroc
346D-81



Falcon Eye
446D-82



Lattice Terracotta
328D-81



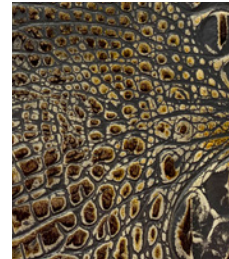
Botanical Copper
440D-81



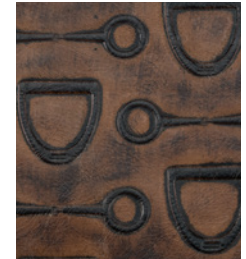
Lukenbach
482D-81



Caiman
566A-81



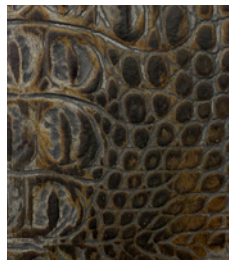
Wooden Armour
446D-81



Derby Garnet
314D-81



Burnished Croc
450D-51



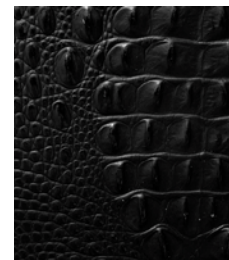
Tick-Tock
329D-81



Diamond Navy
365D-31

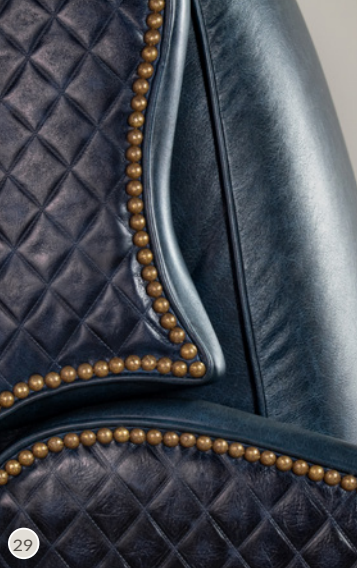


Botanical Midnight
440D-61



Midnight Snack
450D-61





29



30



31



32



33



34



35

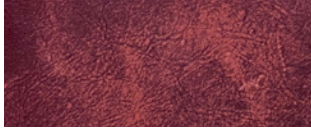


36

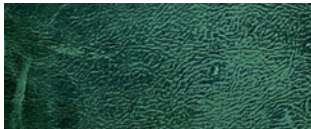


37

Pub Worn



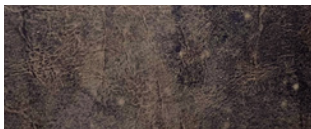
Twizzler Pub Worn
302PW-51



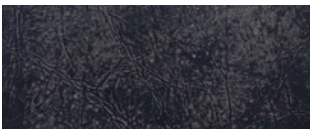
Mystical Forest Pub Worn
445PW-71



Secret Lagoon Pub Worn
448PW-31



Ale House Pub Worn
305PW-81



Hazy Black Pub Worn
524PW-61

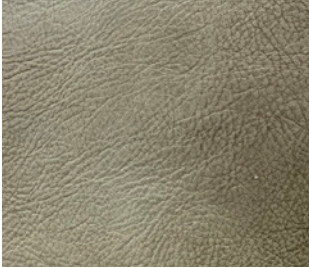


WHAT IS PUB WORN LEATHER?

Pub Worn leather is an OHD exclusive leather treatment. These leathers are some of our regular line offerings that have been hand sanded by our talented leather team. This sanded finish creates a distinctive patina that is unique to every piece.



Hand Rubbed



Worn Porcelain
596R-12



Whiskey Barrel
596R-81



Old English
420A-81



WHAT IS HAND RUBBED LEATHER?

Hand Rubbed leather is a type of semi aniline that is finished by rubbing layers of aniline dyes onto, or off of, full grain leather until the desired color is achieved. This process is done after the pieces have been upholstered, providing a unique rub pattern for every frame. A protective topcoat is added to the dyes, offering protection against stains and wear. Because full grain leather is used, subtle natural markings such as healed scars, finished scratches, insect bites and brands may be present.

This process is done by our skilled upholstery team who understands the interplay of colors where a patina of multiple rich tones is desired. Hand rubbed leather is highly sought after for heirloom and rustic leather furnishings.



42



43



43



42



42



44

ENDURING CRAFTSMANSHIP

Our House Designs furniture is built to last a lifetime. We are committed to creating furniture with the highest quality care and materials ensuring strength and comfort for generations.

All of our frames are made from solid hardwoods, reinforced with support rails, dowels, and screws. Sinuous wire springs are used in the backs of our pieces to provide superior support while maintaining the furniture's shape. Each sprung-up frame has a unique network of eight-way hand-tied tempered steel coils, providing a long-lasting foundation with the highest degree of comfort.

With specialty hides, pattern matching is a particularly complex task as the cutter must align the leather's hair or embossed pattern to flow naturally on the finished piece. Many of our furniture makers are 2nd and 3rd generation industry legacies, employing the highest standards of time-honored furniture making traditions. Our meticulous fabric and leather cutters, talented tailors, and experienced upholsterers are skilled working with an array of materials to create the best quality furniture for you.





FRAMES SHOWN IN

1.....	721 with 328D-81	Page 3	24.....	859 with 440D-82	Page 10
2.....	556 with 358H-81	Page 6	25.....	728-TO with 450D-51	Page 10
3.....	416-S with 409H-81	Page 6	26.....	870-O with 381D-21	Page 10
4.....	812-S with 348H-11	Page 6	27.....	337-C with 566A-81	Page 10
5.....	856-O with 385-81	Page 6	28.....	742-O with 346D-11	Page 10
6.....	811 with 483H-61	Page 6	29.....	582-VT with 365D-31	Page 11
7.....	302-S with 558H-81	Page 6	30.....	548-91 with 446D-81	Page 11
8.....	703-O with 342-41	Page 6	31.....	771-BS with 446D-82	Page 11
9.....	556 with 520H-21	Page 6	32.....	337 with 329D-81	Page 11
10.....	736-O with 358H-81	Page 6	33.....	302-S with 485D-11	Page 11
11.....	728-TO with 409H-81	Page 7	34.....	Kidney Pillow with 566D-81	Page 11
12.....	733-O with 319H-11	Page 7	35.....	414 with 440D-61	Page 11
13.....	435-89 with 558H-81	Page 7	36.....	742-O with 482D-81	Page 11
14.....	701 with 358H-81	Page 7	37.....	863 with 365D-31	Page 11
15.....	714 with 483H-61	Page 7	38.....	561-S with 524PW-61	Page 13
16.....	802-S with 484H-41	Page 7	39.....	441-VT with 445PW-71	Page 13
17.....	703-O with 557H-21	Page 7	40.....	441-VT with 448PW-71	Page 13
18.....	841-O with 484H-41	Page 7	41.....	548-91 with 524PW-61	Page 13
19.....	891-O with 348H-11	Page 7	42.....	441-VT with 420A-81	Page 15
20.....	510-83 with 450D-61	Page 10	43.....	504-GS with 596R-12	Page 15
21.....	721 with 328D-81	Page 10	44.....	536 with 596R-81	Page 15
22.....	891-O with 346D-81	Page 10			
23.....	719-BS with 346D-11	Page 10			



OHD

OUR HOUSE DESIGNS

2 0 2 3

(828) 326-6100

INFO@OURHOUSEDESIGNS.COM

WWW.OURHOUSEDESIGNS.COM

6429 HILDEBRAN SHELBY RD, HICKORY, NC 28602